

## VYR-80 AG

Part circle AG

### General properties:

- Riser-mounted impact sprinkler for gardening, agriculture, flower growing and greenhouses.
- 1/2" male connection.
- Made of brass and stainless steel.
- High-resistance rotating joints.
- Arm with anti-splash design.
- Adjustable deflector plate.
- Irrigation area system controlled by rotating clips.
- Adjustable jet breaker diffuser pin.
- This sprinkler is strong and durable enough to work for many years in urban gardens in tough conditions, caused by vandalism and impact from maintenance equipment.

### Technical specifications:

- Range distance: 29-46 ft. (9-14 m).
- Flow: 1,9-5,2 GPM (460 -1,180 l/h).
- Working pressure: 22-58 PSI (1,5 - 4 BAR).
- Area: Full or part circle.
- Nozzles: A multi-jet nozzle.
- Trajectory angles: 24°.
- Maximum stream height: 9 ft. (2,6 m).
- Rotation time: Adjustable. Depending on the pressure and the nozzles, the rotation will be constant and continuous.
- Uniformity coefficient higher than 90% in areas of 36x36R, 39x39T, 39x43T ft.

### Applications:

- Public and private gardens.
- Horticultural plantations, floriculture and fruit trees.

### Measurements:

- Width: 4,3 in. (11 cm).
- Sprinkler height: 5,1 in. (13 cm).
- Weight: 0,61 lbs. (276 grs).
- Units per box: 75.

### Options:

- Special design with a threaded shaft for fitting to the VYR-961 pop-up head.
- Self-compensating flow control valves of 22-29 PSI (1,5-2 BAR).
- Assembled as a "complete support kit" on a 3.3 or 1.7 ft. galvanized stake with microtube and connectors.
- Assembled as a "complete support kit" on a brass, aluminium or plastic spike.
- Assembled as a "complete support kit" on an aluminium base.

### Models:

- Ref. 008001:** Full circle with deflector.
- Ref. 008002:** Full circle.
- Ref. 008004:** Part (or full) circle with deflector.
- Ref. 008005:** Part (or full) circle.



## VYR-80 AG

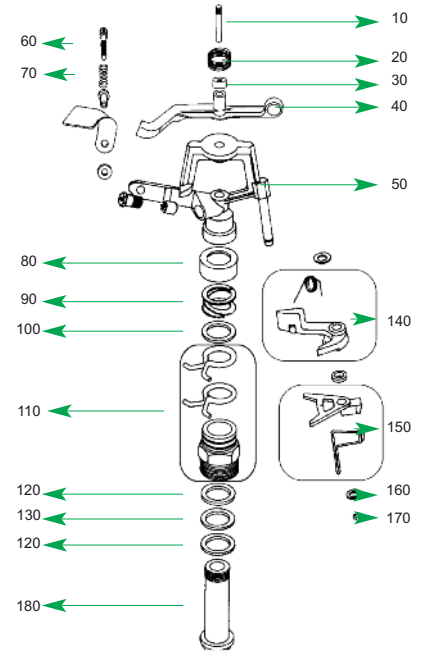
### Tables & Charts

#### Technical guidance table for CU's of VYR-80

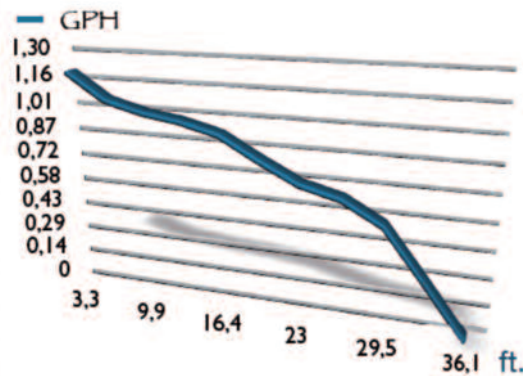
NOZZLE	P (PSI)	Q (GPH)	D (ft.) Radius	Spacing (ft.) / Precipit. rate (in/h)					
				30x30 Rect.	30x30 Triang.	33x33 Rect.	33x33 Triang.	33x39 Triang.	39x39 Triang.
0,12" 3,0 mm.	2,5	560	11	7,7	7,4	6,3	5,3	4,6	3,5
	3	650	11,5	8,2	7,8	6,6	6,0	5,2	4,0
	3,5	720	12	8,9	8,4	7,9	7,6	6,8	5,5
9/64" 3,6 mm.	2,5	787	11,5	9,7	9,0	7,6	7,3	6,6	5,5
	3	862	12	10,6	9,8	8,3	8,0	7,2	6,0
	3,5	931	12,5	11,5	10,6	8,9	8,6	7,8	6,5
5/32" 4,0 mm.	2,5	972	12,5	12,0	11,1	9,3	9,0	8,1	6,8
	3	1065	13	13,1	12,1	10,2	9,8	8,9	7,4
	3,5	1150	14	14,2	13,1	11,0	10,6	9,6	8,0

P: Pressure D: Distance (Range Radius).  
Q: Flow at real test

CU < 85% CU 85-88% CU 88-92% CU > 92%



PSI	43,5
Flow	277 G/h
Nozzles	4,0 mm
Center	VYR
Rot. Veloc.	42 seg/rev.
Height	3 ft.
Test time	60 min
T°	68°F
Wind Veloc.	0 ft./seg.
Date	14/02/2011



#### Performance nozzle tables of VYR-80

	0,117" 3,0 mm.	9/64" 3,5 mm.	5/32" 4 mm.			
PSI	GPM.	Ø Ft.	GPM.	Ø Ft.	GPM.	Ø Ft.
22	1,98	65,5	2,55	69	3,22	72
29	2,25	69	2,90	72	3,73	75,5
36	2,42	72	3,25	75,5	4,18	79
44	2,77	75,5	3,57	75,5	4,53	79
51	3,00	75,5	3,83	79	4,88	82
58	3,17	79	4,10	82	5,20	85

Only for full circle series.

STANDARD Ø ft. : Diameter of coverage

- Sprinklers will be supplied with standard nozzles unless otherwise specified.

- In order to calculate the flow, add the flows of the two nozzles. The range of the rear nozzle must be less than that of the main nozzle.

