



ref. 005005



ref. 005004

## VYR-50

Part circle AG

### General properties:

- Riser-mounted impact sprinkler for gardening, agriculture, floriculture and greenhouses.
- 1/2" male connection.
- Made of brass and stainless steel.
- High-resistance rotating joints.
- Adjustable deflector plate.
- Irrigation area control system by adjustment of rotating clips.
- Adjustable jet breaker diffuser pin.
- This sprinkler is strong and durable enough to work for years in urban gardens in punishing conditions, such as vandalism and impact from maintenance equipment.

### Technical specifications:

- Range distance: 29-46 ft. (9-14 m).
- Flow: 1-6,3 GPM (240 - 1,440 l/h).
- Working pressure: 15-58 PSI (1- 4 BAR).
- Area: Full or part circle.
- Nozzles: A single-jet nozzle.
- Trajectory angles: 28°.
- Maximum stream height: 7 ft. (2,2 m).
- Rotation time: Depending on the pressure and the nozzles, the rotation will be constant and continuous.
- Uniformity coefficient higher than 90% in areas of 33x33R, 40x40T, 40x43T ft.

### Applications:

- Public and private gardens.
- Horticultural plantations, floriculture and fruit trees.

### Measurements:

- Width: 4,3 in. (11 cm).
- Sprinkler height: 15,1 in. (13 cm).
- Weight: 0,53 lbs. (242 grs).
- Units per box: 50.

### Options:

- Threads in BSP or NPT under demand.
- Special design with a threaded shaft for fitting to the VYR-961 pop-up head.
- Self-compensating flow control valves of 1.5 and 2 bar.
- Assembled as a "complete support kit" on a 1.3 or 0.7 m galvanized stake with microtube and connectors.
- Assembled as a "complete support kit" on a brass, aluminium or plastic spike.
- Assembled as a "complete support kit" on an aluminium base.

### Models:

- Ref. 005004:** Part (or full) circle with deflector.
- Ref. 005005:** Part (or full) circle without deflector.



## VYR-50

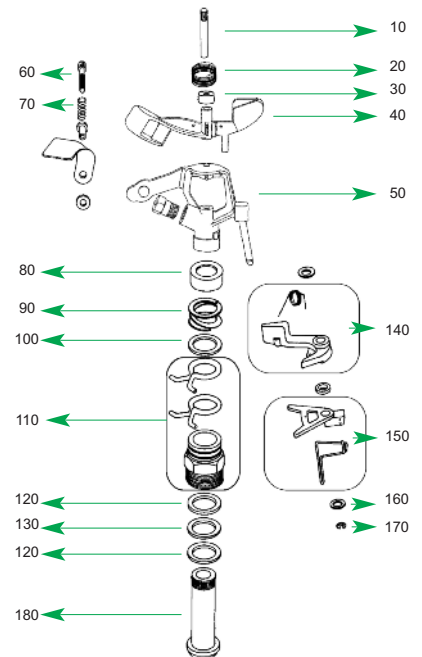
### Tables & Charts

#### Technical guidance table for CU's of VYR-50

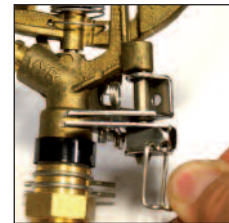
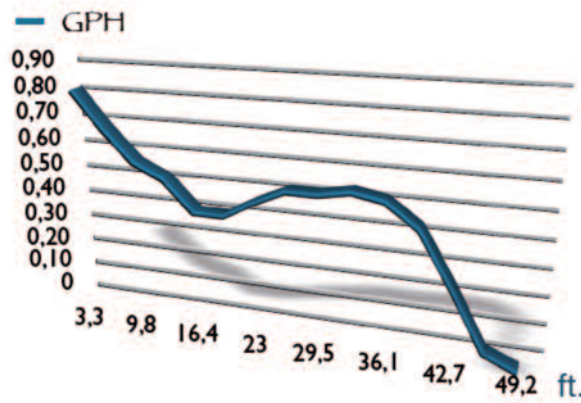
NOZZLE	P (PSI)	Q (GPH)	D (ft.) Radius	Spacing (ft.) / Precipit. rate (in/h)					
				30x30 Rect.	30x30 Triang.	33x33 Rect.	33x33 Triang.	33x39 Triang.	39x39 Triang.
9/64" 3,6 mm.	36	205	32,8	0,38	0,35	0,31	0,28	0,21	0,20
	44	224	32,8	0,41	0,38	0,33	0,31	0,23	0,21
	51	242	32,8	0,44	0,41	0,36	0,33	0,25	0,23
5/32" 4,0 mm.	36	253	32,8	0,46	0,43	0,38	0,35	0,26	0,24
	44	277	32,8	0,51	0,47	0,41	0,38	0,28	0,26
	51	299	36,1	0,55	0,51	0,44	0,41	0,30	0,29
11/64" 4,4 mm.	36	306	36,1	0,56	0,52	0,46	0,42	0,31	0,29
	44	335	36,1	0,62	0,57	0,50	0,46	0,34	0,32
	51	362	39,4	0,67	0,61	0,54	0,50	0,37	0,35

P: Pressure D: Distance (Range Radius)  
Q: Flow at real test

CU < 85% CU 85-88% CU 88-92% CU > 92%



PSI	43,5
Flow	277 GPH
Nozzles	5/32"
Center	VYR
Rot. Veloc.	17 seg/rev.
Height	3 ft.
Test time	60 min
T°	68°F
Wind Veloc.	0 ft./seg.
Date	03/02/2011



Easy part-circle adjustment

#### Performance nozzle tables of VYR-50

	3/32" 2,4 mm.		7/64" 2,8 mm.		0,117" 3,0 mm.		1/8" 3,2 mm.		9/64" 3,5 mm.		5/32" 4 mm.		11/64" 4,4 mm.	
PSI	GPM.	Ø Ft.	GPM.	Ø Ft.	GPM.	Ø Ft.	GPM.	Ø Ft.	GPM.	Ø Ft.	GPM.	Ø Ft.	GPM.	Ø Ft.
15	1,05	59	1,37	62	1,58	62	1,77	66	2,12	66	2,73	69	3,35	72
22	1,32	62	1,63	62	1,93	66	2,12	69	2,50	69	3,30	72	4,00	75
29	1,50	66	1,85	66	2,20	69	2,42	69	2,90	72	3,73	75	4,53	79
36	1,67	69	2,07	69	2,47	72	2,63	72	3,22	75	4,18	79	5,07	82
44	1,80	72	2,28	72	2,68	75	2,90	75	3,52	75	4,58	79	5,58	82
51	1,98	75	2,47	75	2,87	75	3,12	75	3,78	79	4,83	82	5,93	85
58	2,12	79	2,63	79	3,03	79	3,35	79	4,00	82	5,20	85	6,33	89

STANDARD Ø ft. : Diameter of coverage

- Sprinklers will be supplied with standard nozzles unless otherwise specified.
- In order to calculate the flow, add the flows of the two nozzles. The range of the rear nozzle must be less than that of the main nozzle.



Only for full circle series.

