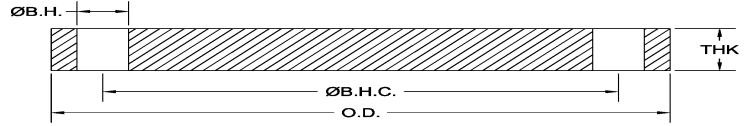


## AWWA BLIND FLANGE (150)



AWWA CLASS B Blind (86 psi, 150#)  
 AWWA CLASS D Blind (150 psi, 150#)  
 AWWA CLASS E Blind (275 psi, 150#)

Parts Available:  
 Meets ANSI class 150 pattern  
 Carbon Steel (C/S) AWWA C207  
 Stainless Steel (S/S) AWWA C228  
 304/304L and 316/316L

SIZE	B BLIND (86 psi)	D BLIND (150 psi)	E BLIND (275 psi)	OD	B.H.C. DIA.	B.H. DIA	#B.H.	AWWA BLINDS					
								THICKNESS			WEIGHTS		
								B	D	E	B	D	E
4"		1028D-B04	1028E-B04	9.00	7.50	0.75	8		0.63	1.13		11	19.20
5"		1028D-B05	1028E-B05	10.00	8.50	0.88	8		0.63	1.19		14	24.80
6"		1028D-B06	1028E-B06	11.00	9.50	0.88	8		0.69	1.31		18	33.60
8"	1028B-B08	1028D-B08	1028E-B08	13.50	11.75	0.88	8	0.69	0.81	1.50	27	32	58.80
10"	1028B-B10	1028D-B10	1028E-B10	16.00	14.25	1.00	12	0.69	0.95	1.56	39	52	84.90
12"	1028B-B12	1028D-B12	1028E-B12	19.00	17.00	1.00	12	0.72	1.12	1.75	67	87	135.90
14"	1028B-B14	1028D-B14	1028E-B14	21.00	18.75	1.13	12	0.79	1.13	1.88	80	107	177.70
16"	1028B-B16	1028D-B16	1028E-B16	23.50	21.25	1.13	16	0.89	1.27	2.00	105	150	236.80
18"	1028B-B18	1028D-B18	1028E-B18	25.00	22.75	1.13	16	0.95	1.33	2.13	132	178	283.70
20"	1028B-B20	1028D-B20	1028E-B20	27.50	25.00	1.13	20	1.04	1.45	2.38	186	234	383.20
22"	1028B-B22	1028D-B22	1028E-B22	29.50	27.25	1.38	20	1.13	1.57	2.50	209	291	463.10
24"	1028B-B24	1028D-B24	1028E-B24	32.00	29.50	1.38	20	1.22	1.66	2.63	268	365	576.10
26"	1028B-B26	1028D-B26	1028E-B26	34.25	31.75	1.38	24	1.31	1.79	2.75	328	448	690.10
28"	1028B-B28	1028D-B28	1028E-B28	36.50	34.00	1.38	28	1.40	1.91	2.75	397	543	782.90
30"	1028B-B30	1028D-B30	1028E-B30	38.75	36.00	1.38	28	1.48	2.01	2.88	488	647	926.80
32"	1028B-B32	1028D-B32	1028E-B32	41.75	38.50	1.63	28	1.58	2.15	3.00	586	799	1114.30
34"	1028B-B34	1028D-B34	1028E-B34	43.75	40.50	1.63	32	1.66	2.25	3.05	675	917	1241.80
36"	1028B-B36	1028D-B36	1028E-B36	46.00	42.75	1.63	32	1.75	2.37	3.21	790	1071	1450.70
38"	1028B-B38	1028D-B38	1028E-B38	48.75	45.25	1.63	32	1.85	2.51	3.39	944	1278	1731.10
40"	1028B-B40	1028D-B40	1028E-B40	50.75	47.25	1.63	36	1.93	2.61	3.53	1,066	1440	1950.20
42"	1028B-B42	1028D-B42	1028E-B42	53.00	49.50	1.63	36	2.02	2.73	3.70	1,220	1648	2231.50
44"	1028B-B44	1028D-B44	1028E-B44	55.25	51.75	1.63	40	2.11	2.85	3.86	1,385	1868	2529.40
46"	1028B-B46	1028D-B46	1028E-B46	57.25	53.75	1.63	40	2.19	2.95	4.00	1,547	2084	2821.30
48"	1028B-B48	1028D-B48	1028E-B48	59.50	56.00	1.63	44	2.29	3.07	4.16	1,739	2341	3169.00
50"	1028B-B50	1028D-B50	1028E-B50	61.75	58.25	1.88	44	2.38	3.20	4.33	1,934	2602	3522.60
52"	1028B-B52	1028D-B52	1028E-B52	64.00	60.50	1.88	44	2.47	3.32	4.85	2,163	2908	3937.10
54"	1028B-B54	1028D-B54	1028E-B54	66.25	62.75	1.88	44	2.56	3.44	4.65	2,408	3237	4382.50
60"	1028B-B60	1028D-B60	1028E-B60	73.00	69.25	1.88	52	2.82	3.78	5.12	3,225	4328	5858.70