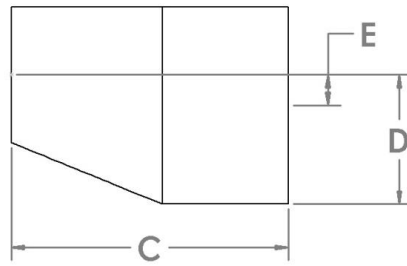
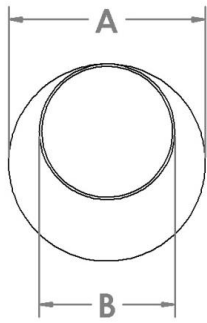


3010 Series Weld On Eccentric



Part No.	Nominal Pipe Size (A)	Nominal Pipe Size (B)	Length (C)	Dimension (D)	Centerline Difference (E)
3010-05I04	5.563"	4.250"	21.000"	3.438"	0.657"
3010-05D04	5.000"			2.875"	0.375"
3010-06I04	6.625"			4.500"	1.188"
3010-06D04	6.000"			3.875"	0.875"
3010-06I05	6.625"	5.250"		4.000"	0.688"
3010-06D05	6.000"			3.375"	0.375"
3010-08I05	8.625"	6.250"		6.000"	1.688"
3010-08D05	8.000"			5.375"	1.375"
3010-08I06	8.625"			5.500"	1.188"
3010-08D06	8.000"			4.875"	0.875"
3010-10I06	10.750"	8.250"		7.625"	2.250"
3010-10D06	10.000"			6.875"	1.875"
3010-10I08	10.750"	10.250"		6.625"	1.250"
3010-10D08	10.000"			5.875"	0.875"
3010-12I08	12.750"			8.625"	2.250"
3010-12D08	12.000"			7.875"	1.875"
3010-12I10	12.750"	10.250"	7.625"	1.250"	
3010-12D10	12.000"		6.875"	0.875"	

- 10 GA. (0.1345") Material.
- Pipe Conforms to ASTM A53.
- Rolled Plate Eccentric Material conforms to ASTM A36.