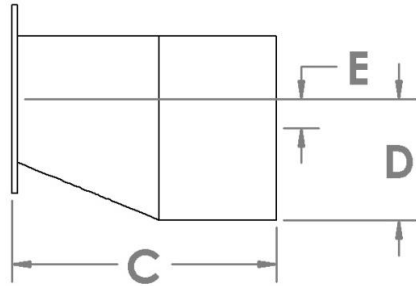
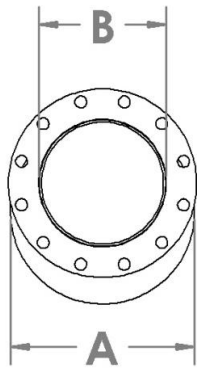


## 3005 Series Weld On Eccentric with Flange



Part No.	Nominal Pipe Size (A)	Flange Size (B)	Length (C)	Dimension (D)	Centerline Difference (E)
3005-05I04F	5.563"	4.000"	21.000"	3.438"	0.657"
3005-05D04F	5.000"			2.875"	0.375"
3005-06I04F	6.625"			4.500"	1.188"
3005-06D04F	6.000"			3.875"	0.875"
3005-06I05F	6.625"	5.000"		4.000"	0.688"
3005-06D05F	6.000"			3.375"	0.375"
3005-08I05F	8.625"			6.000"	1.688"
3005-08D05F	8.000"			5.375"	1.375"
3005-08I06F	8.625"	6.000"		5.500"	1.188"
3005-08D06F	8.000"			4.875"	0.875"
3005-10I06F	10.750"			7.625"	2.250"
3005-10D06F	10.000"			6.875"	1.875"
3005-10I08F	10.750"	8.000"		6.625"	1.250"
3005-10D08F	10.000"			5.875"	0.875"
3005-12I08F	12.750"			8.625"	2.250"
3005-12D08F	12.000"			7.875"	1.875"
3005-12I10F	12.750"	10.000"	7.625"	1.250"	
3005-12D10F	12.000"		6.875"	0.875"	

- 10 GA. (0.1345") Material.
- Pipe Conforms to ASTM A53.
- Rolled Plate Eccentric Material conforms to ASTM A36.
- 1/2" Thick Plate Flanges Conform to ASTM A105 with Drill Pattern to ASME/ ANSI Class 150.