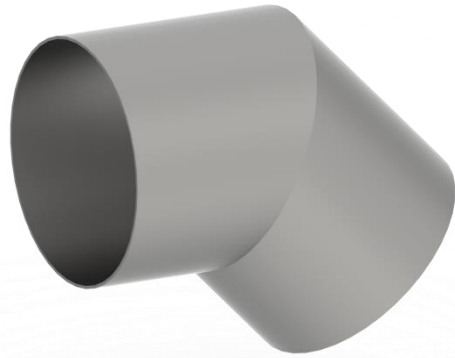
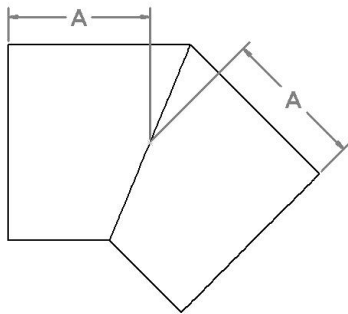
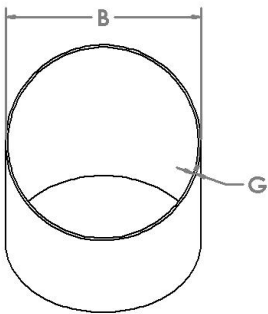


## 1510 Series Weld On 45° Elbow



Part No.	Nominal Pipe Size (B)	Length (A)	Weight	
			(G) 10 GA. (0.1345")	(G) 7 GA. (0.1793")
1510-04D	4.000"	6.000"	5 lbs.	7 lbs.
1510-04I	4.500"			
1510-05D	5.000"		6 lbs.	8 lbs.
1510-05I	5.563"			
1510-06D	6.000"		10 lbs.	14 lbs.
1510-06I	6.625"			
1510-08D	8.000"	8.000"	17 lbs.	24 lbs.
1510-08I	8.625"			
1510-10D	10.000"		21 lbs.	29 lbs.
1510-10I	10.750"			
1510-12D	12.000"		26 lbs.	37 lbs.
1510-12I	12.750"			
1510-14D	14.000"	10.000"	34 lbs.	48 lbs.
1510-16D	16.000"		39 lbs.	55 lbs.
1510-18DXX	18.000"		N/A	60 lbs.
1510-20DXX	20.000"			67 lbs.

- (G) is Pipe Gauge.
- (XX) Indicates 0.250" wall material.
- Use X at the end of Part No. to indicate 7 Gauge Pipe Material.
- Pipe Conforms to ASTM A53.
- Construction is 2 piece mitered.