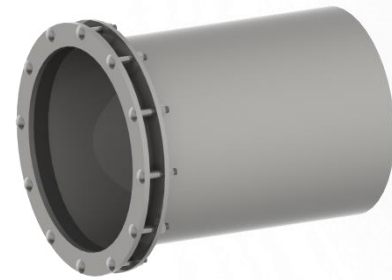
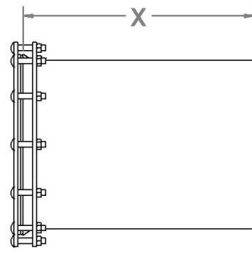
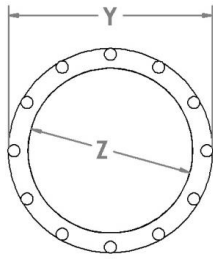




2005 M & M WATER TIGHT LONG STARTER COUPLERS



2005 Part No.	Nom. Pipe O.D. (Z)	Length(X)	Ring O.D. (Y)	Carriage Bolt Size	No. of Bolts per Coupler	Weight
2005-03D	3.000"	16.000"	6.250"	3/8" x 2-1/2"	4	11 lbs.
2005-03I	3.500"		6.250"		4	11 lbs.
2005-04D	4.000"		7.250"		5	12 lbs.
2005-04I	4.500"		7.250"		5	12 lbs.
2005-05D	5.000"	18.000"	8.188"		6	14 lbs.
2005-05I	5.563"		8.188"		6	14 lbs.
2005-06D	6.000"		8.250"		6	19 lbs.
2005-06I	6.625"		9.125"		7	19 lbs.
2005-06P	6.140"		8.750"		6	19 lbs.
2005-08D	8.000"		10.813"		8	25 lbs.
2005-08I	8.625"		11.375"		8	25 lbs.
2005-08P	8.160"		10.813"		8	25 lbs.
2005-10D	10.000"		12.813"		10	32 lbs.
2005-10I	10.750"		13.688"		10	32 lbs.
2005-10P	10.200"	12.813"	10		32 lbs.	
2005-12D	12.000"	15.438"	12		36 lbs.	
2005-12I	12.750"	15.875"	12	36 lbs.		
2005-12P	12.240"	15.438"	12	36 lbs.		
2005-14D	14.000"	17.000"	14	38 lbs.		
2005-15P	15.300"	18.250"	15	42 lbs.		
2005-16D	16.000"	19.000"	16	45 lbs.		
2005-180D	18.000"	20.000"	21.188"	3/8" x 3"	18	53 lbs.
2005-183P	18.360"		21.188"		18	53 lbs.
2005-187P	18.700"		21.750"		18	55 lbs.
2005-20D	20.000"		23.500"		20	57 lbs.
2005-20P	20.400"		23.500"		20	57 lbs.
2005-22P	22.047"		25.250"		22	67 lbs.
2005-24D	24.000"		28.000"		24	73 lbs.
2005-24P	24.803"	28.000"	24	73 lbs.		
2005-27P	27.953"	31.500"	28	86 lbs.		
2005-31P	31.496"	35.750"	30	1/2" x 4"	101 lbs.	

- Use E/G/S after Part # to indicate Epoxy/ Galvanized/ 304 Stainless Steel.
- Bodies are 11 GA. Material.
- Rings are 5/16" Thick on Carbon Steel 1/4" Thick on Stainless Steel.
- Pressure Rating of 150 PSI.