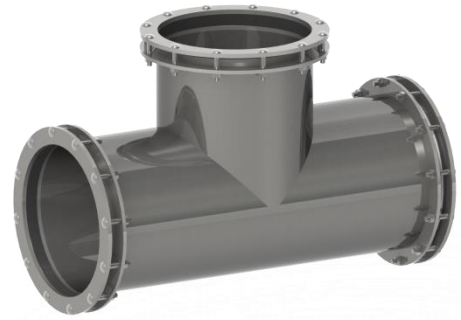
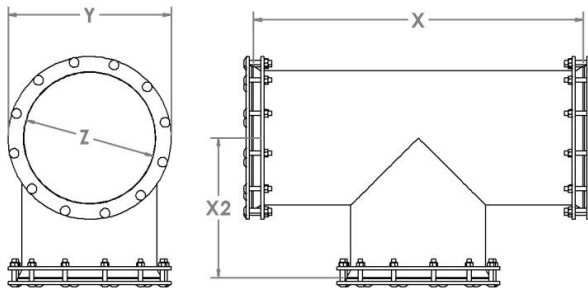


1060 M & M WATER TIGHT TEE



1060 Tee Part No.	Nominal Pipe O.D. (Z)	Length (X)	Length (X2)	Ring O.D. (Y)	Carriage Bolt Size	No. of Bolts per Coupler	Weight
1060-03D	3.000"	20.000"	10.000"	6.250"	3/8" x 2-1/2"	12	25 lbs.
1060-03I	3.500"	20.000"	10.000"	6.250"		12	29 lbs.
1060-04D	4.000"	22.000"	11.000"	7.250"		15	31 lbs.
1060-04I	4.500"	22.000"	11.000"	7.250"		15	34 lbs.
1060-05D	5.000"	24.000"	12.000"	8.188"		18	38 lbs.
1060-05I	5.563"	24.000"	12.000"	8.188"		18	40 lbs.
1060-06D	6.000"	26.000"	13.000"	8.250"		18	45 lbs.
1060-06I	6.625"	26.000"	13.000"	9.125"		21	43 lbs.
1060-06P	6.140"	26.000"	13.000"	8.750"		18	58 lbs.
1060-08D	8.000"	28.000"	14.000"	10.813"		24	61 lbs.
1060-08I	8.625"	28.000"	14.000"	11.375"		24	60 lbs.
1060-08P	8.160"	28.000"	14.000"	10.813"		24	76 lbs.
1060-10D	10.000"	30.000"	15.000"	12.813"		30	79 lbs.
1060-10I	10.750"	30.000"	15.000"	13.688"		30	97 lbs.
1060-10P	10.200"	30.000"	15.000"	12.813"		30	96 lbs.
1060-12D	12.000"	32.000"	16.000"	15.438"		36	99 lbs.
1060-12I	12.750"	32.000"	16.000"	15.875"		36	101 lbs.
1060-12P	12.240"	32.000"	16.000"	15.438"		36	113 lbs.
1060-14D	14.000"	34.000"	17.000"	17.000"		42	122 lbs.
1060-15P	15.300"	36.000"	18.000"	18.250"		45	129 lbs.
1060-16D	16.000"	36.000"	18.000"	19.000"		48	156 lbs.
1060-180D	18.000"	38.000"	19.000"	21.188"		54	158 lbs.
1060-183P	18.360"	38.000"	19.000"	21.188"		54	165 lbs.
1060-187P	18.700"	38.000"	19.000"	21.750"		54	183 lbs.
1060-20D	20.000"	40.000"	20.000"	23.500"	60	186 lbs.	
1060-20P	20.400"	40.000"	20.000"	23.500"	60	213 lbs.	
1060-22P	22.047"	46.000"	23.000"	25.250"	3/8" x 3"	66	244 lbs.
1060-24D	24.000"	48.000"	24.000"	28.000"		72	250 lbs.
1060-24P	24.803"	48.000"	24.000"	28.000"		72	299 lbs.
1060-27P	27.953"	52.000"	26.000"	31.500"		84	367 lbs.
1060-31P	31.496"	60.000"	30.000"	35.750"	1/2" x 4"	90	417 lbs.

- Use E/G/S after Part # to indicate Epoxy/ Galvanized/ 304 Stainless Steel.
- Bodies are 11 GA. Material.
- Rings are 5/16" Thick on Carbon Steel 1/4" Thick on Stainless Steel.
- Pressure Rating of 150 PSI.

