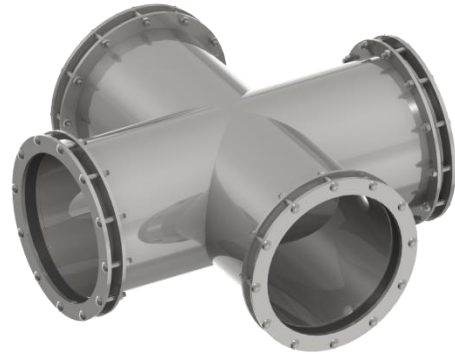
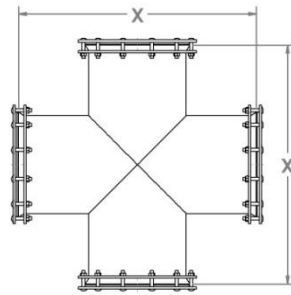
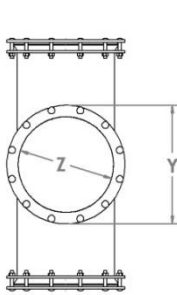


## 1045 M & M WATER TIGHT CROSS



1030 Coupler Part No.	Nominal Pipe O.D. (Z)	Length (X)	Ring O.D. (Y)	Carriage Bolt Size	No. of Bolts per Coupler	Weight
1045-03D	3.000"	20.000"	6.250"	3/8" x 2-1/2"	16	34 lbs.
1045-03I	3.500"	20.000"	6.250"		16	34 lbs.
1045-04D	4.000"	22.000"	7.250"		20	39 lbs.
1045-04I	4.500"	22.000"	7.250"		20	41 lbs.
1045-05D	5.000"	24.000"	8.188"		24	45 lbs.
1045-05I	5.563"	24.000"	8.188"		24	50 lbs.
1045-06D	6.000"	26.000"	8.250"		24	53 lbs.
1045-06I	6.625"	26.000"	9.125"		28	59 lbs.
1045-06P	6.140"	26.000"	8.750"		24	56 lbs.
1045-08D	8.000"	28.000"	10.813"		32	75 lbs.
1045-08I	8.625"	28.000"	11.375"		32	78 lbs.
1045-08P	8.160"	28.000"	10.813"		32	77 lbs.
1045-10D	10.000"	30.000"	12.813"		40	97 lbs.
1045-10I	10.750"	30.000"	13.688"		40	102 lbs.
1045-10P	10.200"	30.000"	12.813"		40	123 lbs.
1045-12D	12.000"	32.000"	15.438"		48	122 lbs.
1045-12I	12.750"	32.000"	15.875"		48	126 lbs.
1045-12P	12.240"	32.000"	15.438"		48	129 lbs.
1045-14D	14.000"	34.000"	17.000"		56	143 lbs.
1045-15P	15.300"	36.000"	18.250"		60	155 lbs.
1045-16D	16.000"	36.000"	19.000"		64	164 lbs.
1045-180D	18.000"	38.000"	21.188"		72	199 lbs.
1045-183P	18.360"	38.000"	21.188"		72	201 lbs.
1045-187P	18.700"	38.000"	21.750"		72	209 lbs.
1045-20D	20.000"	40.000"	23.500"	80	232 lbs.	
1045-20P	20.400"	40.000"	23.500"	80	235 lbs.	
1045-22P	22.047"	46.000"	25.250"	3/8" x 3"	88	266 lbs.
1045-24D	24.000"	48.000"	28.000"		96	303 lbs.
1045-24P	24.803"	48.000"	28.000"		96	310 lbs.
1045-27P	27.953"	52.000"	31.500"		112	369 lbs.
1045-31P	31.496"	60.000"	35.750"		120	448 lbs.

- Use E/G/S after Part # to indicate Epoxy/ Galvanized/ 304 Stainless Steel.
- Bodies are 11 GA. Material.
- Rings are 5/16" Thick on Carbon Steel 1/4" Thick on Stainless Steel.
- Pressure Rating of 150 PSI.

