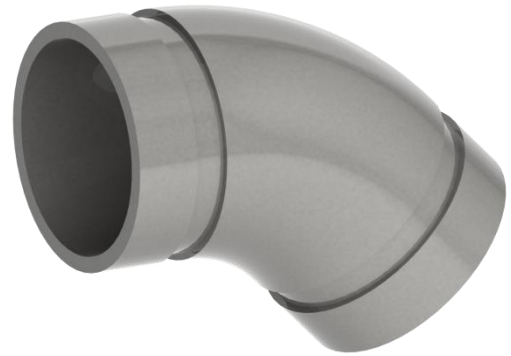
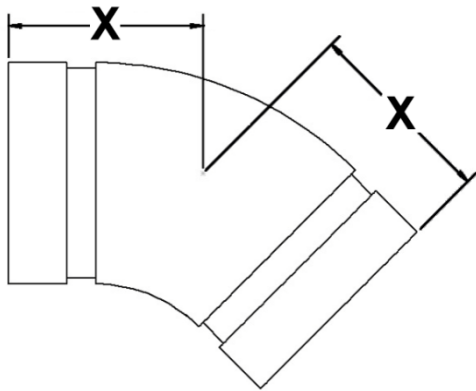


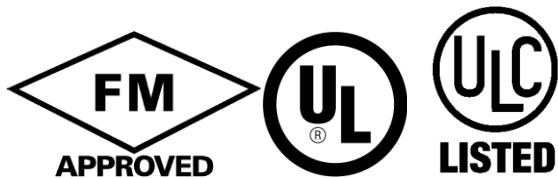
Morrill[®]

INDUSTRIES, INC.

Groove 45° Elbow



Part No.	Nom. Size	X	Weight
G45-015	1-1/2	1.75"	1.30 lbs.
G45-020	2	2.00"	2.00 lbs.
G45-025	2-1/2	2.25"	3.10 lbs.
G45-030	3	2.75"	4.00 lbs.
G45-040	4	3.00"	7.10 lbs.
G45-050	5	3.25"	11.00 lbs.
G45-060	6	3.50"	15.40 lbs.
G45-080	8	4.25"	26.50 lbs.
G45-100	10	4.75"	44.10 lbs.
G45-120	12	5.00"	63.90 lbs.



- Ductile Iron Fittings conforming to ASTM A-536.
- Maximum Working Pressure 3/4" thru 6" is 1000 psi.
- Maximum Working Pressure 8" thru 12" is 800 psi.

