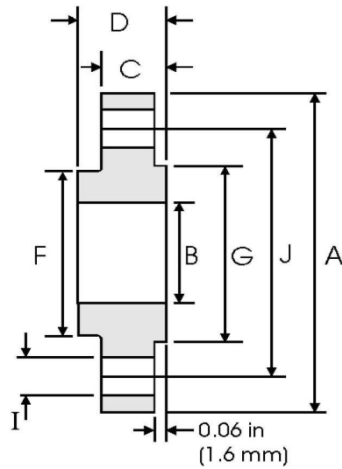


1029 Raised Face Slip On Forged Flanges (RFSO)



PART NO.	Pipe		Flange Data				Hub Data	Raised Face	Drilling Data			Weight
	Pipe Size	O.D.	A	B	C	D	F	G	H	I	J	
1029-005	1/2"	0.84"	3.50"	0.88"	0.44"	0.62"	1.19"	1.38"	4	0.62"	2.38"	1.0 lbs.
1029-007	3/4"	1.05"	3.88"	1.09"	0.50"	0.62"	1.50"	1.69"	4	0.62"	2.75"	2.0 lbs.
1029-010	1"	1.32"	4.25"	1.36"	0.56"	0.69"	1.94"	2.00"	4	0.62"	3.12"	2.0 lbs.
1029-012	1-1/4"	1.66"	4.62"	1.70"	0.62"	0.81"	2.31"	2.50"	4	0.62"	3.50"	3.0 lbs.
1029-015	1-1/2"	1.90"	5.00"	1.95"	0.69"	0.88"	2.56"	2.88"	4	0.62"	3.88"	3.0 lbs.
1029-02	2"	2.38"	6.00"	2.44"	0.75"	1.00"	3.06"	3.62"	4	0.75"	4.75"	5.0 lbs.
1029-025	2-1/2"	2.88"	7.00"	2.94"	0.88"	1.12"	3.56"	4.12"	4	0.75"	5.50"	7.0 lbs.
1029-03	3"	3.50"	7.50"	3.57"	0.94"	1.19"	4.25"	5.00"	4	0.75"	6.00"	8.0 lbs.
1029-035	3-1/2"	4.00"	8.50"	4.07"	0.94"	1.25"	4.81"	5.50"	8	0.75"	7.00"	11.0 lbs.
1029-04	4"	4.50"	9.00"	4.57"	0.94"	1.31"	5.31"	6.19"	8	0.75"	7.50"	13.0 lbs.
1029-05	5"	5.56"	10.00"	5.66"	0.94"	1.44"	6.44"	7.31"	8	0.88"	8.50"	15.0 lbs.
1029-06	6"	6.63"	11.00"	6.72"	1.00"	1.56"	7.56"	8.50"	8	0.88"	9.50"	19.0 lbs.
1029-08	8"	8.63"	13.50"	8.72"	1.12"	1.75"	9.69"	10.62"	8	0.88"	11.75"	30.0 lbs.
1029-10	10"	10.75"	16.00"	10.88"	1.19"	1.94"	12.00"	12.75"	12	1.00"	14.25"	43.0 lbs.
1029-12	12"	12.75"	19.00"	12.88"	1.25"	2.19"	14.38"	15.00"	12	1.00"	17.00"	64.0 lbs.
1029-14	14"	14.00"	21.00"	14.14"	1.38"	2.25"	15.75"	16.25"	12	1.12"	18.75"	90.0 lbs.
1029-16	16"	16.00"	23.50"	16.16"	1.44"	2.50"	18.00"	18.50"	16	1.12"	21.25"	98.0 lbs.
1029-18	18"	18.00"	25.00"	18.18"	1.56"	2.69"	19.88"	21.00"	16	1.25"	22.75"	130.0 lbs.
1029-20	20"	20.00"	27.50"	20.20"	1.69"	2.88"	22.00"	23.00"	20	1.25"	25.00"	165.0 lbs.
1029-24	24"	24.00"	32.00"	24.25"	1.88"	3.25"	26.12"	27.25"	20	1.38"	29.50"	220.0 lbs.

- ANSI B16.5 Class 150 lbs.
- Add (S) after 1029 for 304 SST Flanges (i.e. 1029S-10).

