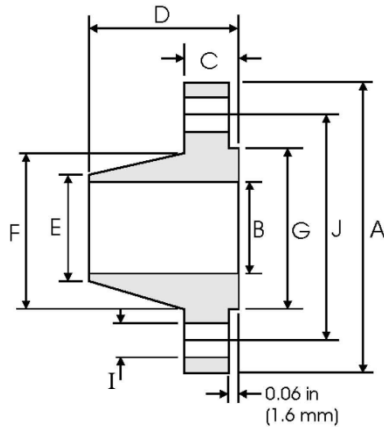


## 1026 Weld Neck Flanges



| PART NO. | Pipe      |         | Flange Data |         |        |        | Hub Data |         | Raised Face | Drilling Data |         |         | Weight   |          |
|----------|-----------|---------|-------------|---------|--------|--------|----------|---------|-------------|---------------|---------|---------|----------|----------|
|          | Pipe Size | O.D.    | A           | B       | C      | D      | E        | F       | G           | No. B.H.      | I       | J       |          |          |
| 1026-005 | 1/2"      | 0.840"  | 3.500"      | 0.620"  | 0.440" | 1.880" | 0.840"   | 1.190"  | 1.380"      | 4             | 0.620"  | 2.380"  | 2 lbs.   |          |
| 1026-007 | 3/4"      | 1.050"  | 3.880"      | 0.820"  | 0.500" | 2.060" | 1.050"   | 1.500"  | 1.690"      |               |         | 2.750"  | 2 lbs.   |          |
| 1026-010 | 1"        | 1.315"  | 4.250"      | 1.050"  | 0.560" | 2.190" | 1.320"   | 1.940"  | 2.000"      |               |         | 3.120"  | 3 lbs.   |          |
| 1026-012 | 1-1/4"    | 1.660"  | 4.620"      | 1.380"  | 0.620" | 2.250" | 1.660"   | 2.310"  | 2.500"      |               |         | 3.500"  | 3 lbs.   |          |
| 1026-015 | 1-1/2"    | 1.900"  | 5.000"      | 1.610"  | 0.690" | 2.440" | 1.900"   | 2.560"  | 2.880"      |               |         | 3.880"  | 4 lbs.   |          |
| 1026-02  | 2"        | 2.375"  | 6.000"      | 2.070"  | 0.750" | 2.500" | 2.380"   | 3.060"  | 3.620"      |               |         | 0.750"  | 4.750"   | 6 lbs.   |
| 1026-025 | 2-1/2"    | 2.875"  | 7.000"      | 2.470"  | 0.880" | 2.750" | 2.880"   | 3.560"  | 4.120"      | 5.500"        | 8 lbs.  |         |          |          |
| 1026-03  | 3"        | 3.500"  | 7.500"      | 3.070"  | 0.940" | 2.750" | 3.500"   | 4.250"  | 5.000"      | 8             | 0.880"  |         | 6.000"   | 10 lbs.  |
| 1026-035 | 3-1/2"    | 4.000"  | 8.500"      | 3.550"  |        | 2.810" | 4.000"   | 4.810"  | 5.500"      |               |         | 7.000"  | 12 lbs.  |          |
| 1026-04  | 4"        | 4.500"  | 9.000"      | 4.030"  |        | 3.000" | 4.500"   | 5.310"  | 6.190"      |               |         | 7.500"  | 15 lbs.  |          |
| 1026-05  | 5"        | 5.556"  | 10.000"     | 5.050"  |        | 3.500" | 5.560"   | 6.440"  | 7.310"      |               |         | 8.500"  | 8.500"   | 19 lbs.  |
| 1026-06  | 6"        | 6.625"  | 11.000"     | 6.070"  | 6.630" |        | 7.560"   | 8.500"  | 9.500"      | 24 lbs.       |         |         |          |          |
| 1026-08  | 8"        | 8.625"  | 13.500"     | 7.980"  | 1.120" |        | 4.000"   | 8.630"  | 9.690"      | 10.620"       | 11.750" |         | 39 lbs.  |          |
| 1026-10  | 10"       | 10.750" | 16.000"     | 10.020" | 1.190" | 4.500" | 10.750"  | 12.000" | 12.750"     | 12            | 1.000"  | 14.250" | 52 lbs.  |          |
| 1026-12  | 12"       | 12.750" | 19.000"     | 12.000" | 1.250" |        | 12.750"  | 14.380" | 15.000"     |               |         | 17.000" | 80 lbs.  |          |
| 1026-14  | 14"       | 14.000" | 21.000"     | *       | 1.380" | 5.000" | 14.000"  | 15.70"  | 16.250"     | 16            | 1.120"  | 18.750" | 110 lbs. |          |
| 1026-16  | 16"       | 16.000" | 23.500"     |         | 1.440" |        | 16.000"  | 18.000" | 18.500"     |               |         | 21.250" | 140 lbs. |          |
| 1026-18  | 18"       | 18.000" | 25.000"     |         | 1.560" | 5.500" | 18.000"  | 19.880" | 21.000"     |               |         | 22.750" | 150 lbs. |          |
| 1026-20  | 20"       | 20.000" | 27.500"     |         | 1.690" | 5.690" | 20.000"  | 22.000" | 23.000"     | 25.000"       | 20      | 1.250"  | 25.000"  | 180 lbs. |
| 1026-24  | 24"       | 24.000" | 32.000"     |         | 1.880" | 6.000" | 24.000"  | 26.120" | 27.250"     | 29.500"       |         |         | 260 lbs. |          |

- \* - To be specified by Customer.
- ANSI B16.5 Class 150 lbs.
- Add (S) after 1026 for 304 SST Flanges (i.e. 1026S-10).

