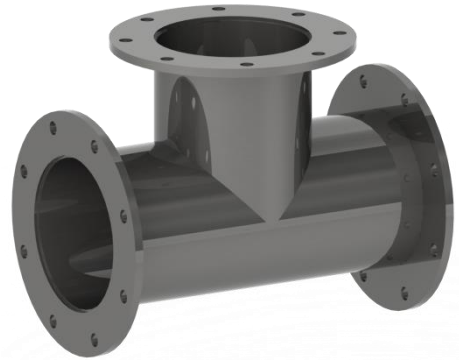
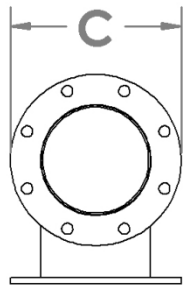
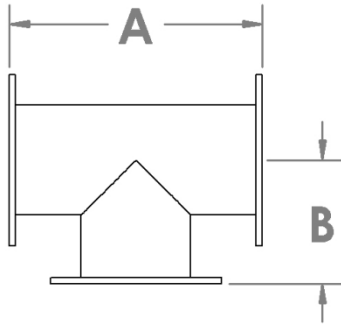


1527 Fabricated Flanged Tees

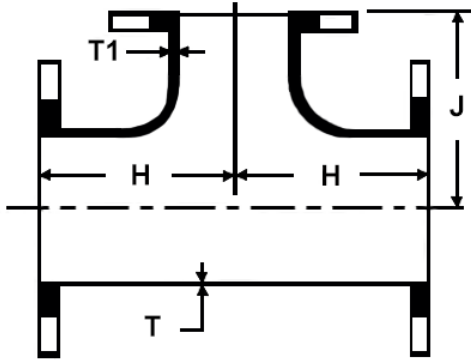


Part No.*	Nom. Pipe Size	Dimensions			Thickness	Weight
		A	B	C		
1527-03I	3.500"	12.00"	8.00"	7.50"	0.216"	28.0 lbs.
1527-04I	4.500"	14.00"	8.00"	9.00"	0.237"	39.0 lbs.
1527-05I	5.563"	16.00"	8.00"	10.00"	0.134"	37.0 lbs.
1527-06I	6.625"	18.00"	9.00"	11.00"	0.134"	46.0 lbs.
1527-08I	8.625"	20.00"	10.00"	13.50"	0.188"	77.0 lbs.
1527-10I	10.750"	22.00"	11.00"	16.00"	0.188"	102.0 lbs.
1527-12I	12.750"	24.00"	12.00"	19.00"	0.188"	140.0 lbs.
1527-14	14.000"	26.00"	14.00"	21.00"	0.188"	188.0 lbs.
1527-16	16.000"	30.00"	16.00"	23.50"	0.188"	243.0 lbs.
1527-18	18.000"	34.00"	18.00"	25.00"	0.250"	329.0 lbs.
1527-20	20.000"	38.00"	20.00"	27.50"	0.250"	393.0 lbs.
1527-24	24.000"	46.00"	24.00"	32.00"	0.250"	706.0 lbs.
1527-30	30.000"	58.00"	30.00"	38.75"	0.375"	1,376.0 lbs.

- *Use B/E/G/S after Part to indicate Black, Epoxy, Galvanized, or 304 Stainless Steel.
- Carbon Steel Pipe conforms to ASTM A153 Grade B.
- *304/304L Stainless Steel Pipe Conforms to ASTM A778/A312.
 - Stainless Fittings use a Schedule 10 Pipe Thickness.
- 1/2" Thick Plate Flanges conform to ASTM A105 (3"-12" Sizes).
- AWWA Class B Flanges conform to AWWA C207-13 or C207-86 (14"-20").
- AWWA Class D Flanges conform to AWWA C207-13 or C207-86 (24"-30").
- 304 SST Flanges conform to ASTM A182 with Drill Pattern to ASME/ANSI Class 150.
- Galvanized Coating conforms to ASTM A123.
- Epoxy Coating Conforms to AWWA standards C116, C213 & C5500, certified ANSI/NSF 61.
- Custom Fabrications are available upon request.
- Exotic Alloy Build is available upon request.



1527-DI - DUCTILE IRON FLANGED TEES



Part No.*	Nom. Pipe Size	Dimensions				Weight
		H	J	T	T1	
1527-DI03	3"	5.50"	5.50"	0.48"	0.48"	40
1527-DI04	4"	6.50"	6.50"	0.52"	0.52"	65
1527-DI05	5"	7.50"	7.50"	0.50"	0.50"	80
1527-DI06	6"	8.00"	8.00"	0.55"	0.55"	95
1527-DI08	8"	9.00"	9.00"	0.60"	0.60"	155
1527-DI10	10"	11.00"	11.00"	0.80"	0.80"	270
1527-DI12	12"	12.00"	12.00"	0.87"	0.87"	385
1527-DI14	14"	14.00"	14.00"	0.66"	0.66"	435
1527-DI16	16"	15.00"	15.00"	0.70"	0.70"	550
1527-DI18	18"	16.50"	16.50"	0.75"	0.75"	665
1527-DI20	20"	18.00"	18.00"	0.80"	0.80"	855
1527-DI24	24"	22.00"	22.00"	0.89"	0.89"	1,330
1527-DI30	30"	25.00"	25.00"	1.03"	1.03"	2,150
1527-DI36	36"	28.00"	28.00"	1.15"	1.15"	3,160
1527-DI42	42"	31.00"	31.00"	1.78"	1.78"	5,580
1527-DI48	48"	34.00"	34.00"	1.96"	1.96"	7,385
1527-DI54	54"	39.00"	39.00"	1.05"	1.05"	6,025
1527-DI64	64"	48.00"	48.00"	1.16"	1.16"	10,995

- 1/2" Thick Plate Flanges conform to ASTM A105 (3"-12" Sizes).
- AWWA Class B Flanges conform to AWWA C207-13 or C207-86 (14"-20").
- AWWA Class D Flanges conform to AWWA C207-13 or C207-86 (24"-30").
- Custom Fabrications are available upon request.
- Exotic Alloy Build is available upon request.

