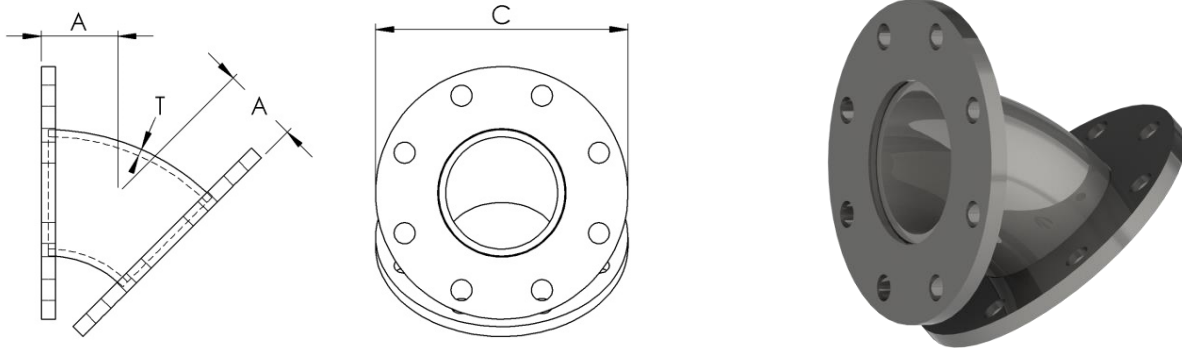


## 1529 Fabricated Flanged 45° Elbows

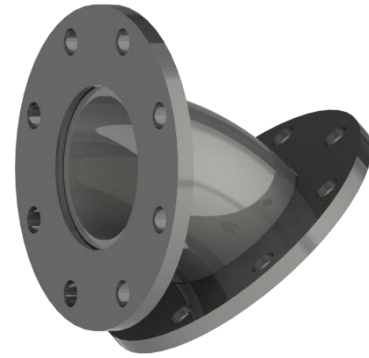
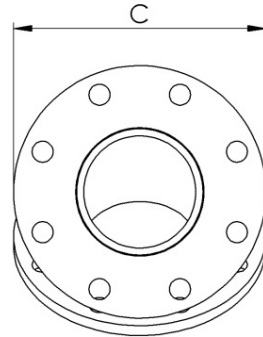
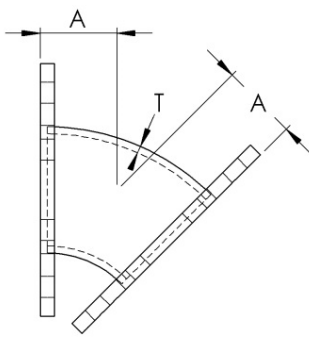


Part No.*	Nom. Pipe Size	Dimensions			Weight
		A	C	T	
1529-03**	3"	6.000"	7.500"	0.216"	19.0 lbs.
1529-04	4"	2.750"	9.000"	0.150"	16.0 lbs.
1529-05	5"	3.375"	10.000"	0.258"	22.0 lbs.
1529-06	6"	4.000"	11.000"	0.212"	24.0 lbs.
1529-08	8"	5.250"	13.500"	0.250"	39.0 lbs.
1529-10	10"	6.500"	16.000"	0.250"	56.0 lbs.
1529-12	12"	7.750"	19.000"	0.250"	83.0 lbs.
1529-14	14"	9.000"	21.000"	0.375"	142.0 lbs.
1529-16	16"	10.250"	23.500"	0.375"	184.0 lbs.
1529-18	18"	11.500"	25.000"	0.375"	210.0 lbs.
1529-20	20"	12.750"	27.500"	0.375"	251.0 lbs.
1529-24	24"	15.250"	32.000"	0.375"	455.0 lbs.
1529-30	30"	18.750"	38.750"	0.375"	696.0 lbs.

- \*Use B/E/G/S after Part Number to indicate Black, Epoxy, Galvanized, or 304 SST.
- \*\* 3" Unit will be Fabricated from Standard Wall Pipe and Miter Cut.
- Butt Weld Long Radius 45° Elbows conform to ASME B16.9.
  - Material conforms to ASTM A-234 Grade B.
- 1/2" Thick Plate Flanges conform to ASTM A105 (3"-12" Sizes).
- AWWA Class B Flanges conform to AWWA C207-13 or C207-86 (14"-20").
- AWWA Class D Flanges conform to AWWA C207-13 or C207-86 (24"-30").
- 304 Stainless Steel Flanges conform to ASTM A182.
  - Drill Pattern conforms to ASME/ANSI Class 150.
- Galvanized Coating conforms to ASTM A123.
- Epoxy Coating conforms to AWWA standards C116, C213 & C5500, certified ANSI/NSF 61.
- Custom Fabrications are available upon request.
- Exotic Alloy Build is available upon request.



## 1529-DI – Ductile Iron Flanged 45° Elbows



Part No.*	Nom. Pipe Size	Dimensions			Weight
		A	C	T	
1529-DI03	3"	3.000"	7.500"	0.480"	20.0 lbs.
1529-DI04	4"	4.000"	9.000"	0.520"	40.0 lbs.
1529-DI05	5"	4.500"	10.000"	0.880"	45.0 lbs.
1529-DI06	6"	5.000"	11.000"	0.550"	55.0 lbs.
1529-DI08	8"	5.500"	13.500"	0.600"	90.0 lbs.
1529-DI10	10"	6.500"	16.000"	0.680"	130.0 lbs.
1529-DI12	12"	7.500"	19.000"	0.750"	195.0 lbs.
1529-DI14	14"	7.500"	21.000"	0.660"	220.0 lbs.
1529-DI16	16"	8.000"	23.500"	0.700"	280.0 lbs.
1529-DI18	18"	8.500"	25.000"	0.750"	325.0 lbs.
1529-DI20	20"	9.500"	27.500"	0.800"	430.0 lbs.
1529-DI24	24"	11.000"	32.000"	0.890"	630.0 lbs.
1529-DI30	30"	15.000"	38.750"	1.030"	1,120.0 lbs.
1529-DI36	36"	18.000"	46.000"	1.150"	1,755.0 lbs.
1529-DI42	42"	21.000"	53.000"	1.280"	2,600.0 lbs.
1529-DI48	48"	24.000"	59.500"	1.420"	3,580.0 lbs.
1529-DI54	54"	20.500"	66.250"	0.900"	2,735.0 lbs.
1529-DI60	60"	23.500"	73.000"	0.940"	3,790.0 lbs.
1529-DI64	64"	25.000"	80.000"	0.990"	5,105.0 lbs.

- Butt Weld Long Radius 45° Elbows conform to ASME B16.9.
  - Material conforms to ASTM A-234 Grade B.
- 1/2" Thick Plate Flanges conform to ASTM A105 (3"-12" Sizes).
- AWWA Class B Flanges conform to AWWA C207-13 or C207-86 (14"-20").
- AWWA Class D Flanges conform to AWWA C207-13 or C207-86 (24"-30").
- 304 Stainless Steel Flanges conform to ASTM A182.
  - Drill Pattern conforms to ASME/ANSI Class 150.
- Custom Fabrications are available upon request.
- Exotic Alloy Build is available upon request.

