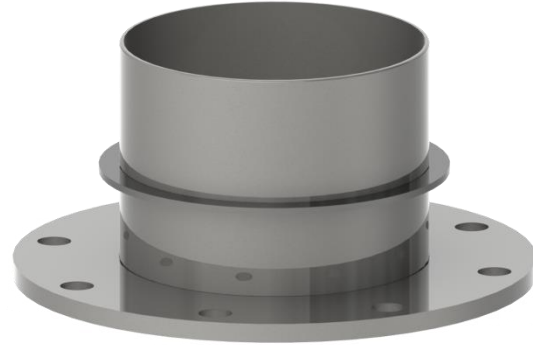
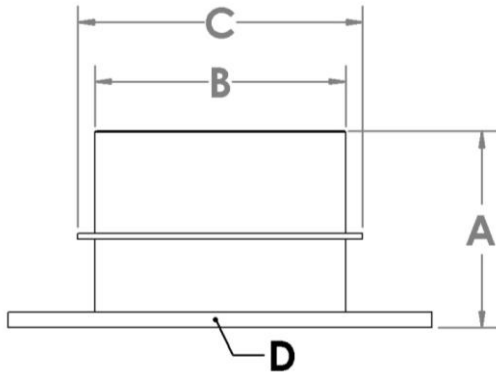


## 531 Flange x Circle Lock Male



Part No.	Nom. Pipe Size (B)	Flange Size (D)	Dimension (A)	Dimension (C)	Approx. Weight
531-0405G	5"	4"	6.250"	6.000"	12 lbs.
531-0406G	6"	4"	6.250"	7.000"	12 lbs.
531-05G	5"	5"	6.250"	6.000"	12 lbs.
531-06G	6"	6"	6.250"	7.000"	14 lbs.
531-0608G	8"	6"	6.250"	9.062"	16 lbs.
531-0610G	10"	6"	6.250"	11.125"	20 lbs.
531-08G	8"	8"	6.250"	9.062"	19 lbs.
531-0810G	10"	8"	6.250"	11.125"	20 lbs.
531-0812G	12"	8"	6.250"	13.188"	27 lbs.
531-10G	10"	10"	6.250"	11.125"	24 lbs.
531-1012G	12"	10"	6.250"	13.188"	28 lbs.
531-12G	12"	12"	6.250"	13.188"	32 lbs.

- Flange x Circle Lock Male.
- Flanges Material is ASTM A-105 conforming to ASME/ANSI Drilling for Class 150.
- Carbon Steel Fabrication.
- Galvanized Coating Conforms to ASTM A-123.
- Circle Lock Ring Lock (Part No.'s 560) Sold Separately.

