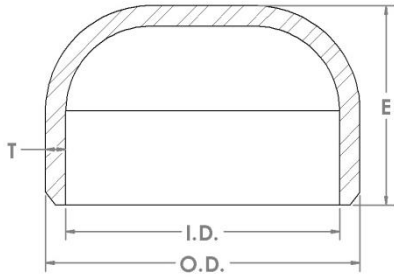


BUTT WELD CAPS



Part No.	Nominal	Outside Diameter	Inside Diameter	Wall Thickness (T)	Length (E)	Pipe Schedule	Weight
220-005	1/2"	0.840"	0.620"	0.109"	1.000"	40	0.08 lbs.
220-007	3/4"	1.050"	0.820"	0.113"	1.250"	40	0.14 lbs.
220-010	1"	1.320"	1.050"	0.133"	1.500"	40	0.21 lbs.
220-012	1-1/4"	1.660"	1.380"	0.140"	1.500"	40	0.33 lbs.
220-015	1-1/2"	1.900"	1.610"	0.145"	1.500"	40	0.54 lbs.
220-020	2"	2.380"	2.070"	0.154"	1.500"	40	0.80 lbs.
220-025	2-1/2"	2.880"	2.470"	0.203"	1.500"	40	1.00 lbs.
220-030	3"	3.500"	3.070"	0.216"	2.000"	40	1.70 lbs.
220-035	3-1/2"	4.000"	3.550"	0.226"	2.500"	40	2.30 lbs.
220-040	4"	4.500"	4.030"	0.237"	2.500"	40	2.80 lbs.
220-050	5"	5.560"	5.050"	0.258"	3.000"	40	4.60 lbs.
220-060	6"	6.620"	6.070"	0.280"	3.500"	40	6.90 lbs.
220-080	8"	8.620"	7.980"	0.322"	4.000"	40	11.80 lbs.
220-100	10"	10.750"	10.020"	0.365"	5.000"	40	20.80 lbs.
220-120	12"	12.750"	12.000"	0.375"	6.000"	*	30.30 lbs.
220-140	14"	14.000"	13.250"	0.375"	6.500"	30	36.50 lbs.
220-160	16"	16.000"	15.250"	0.375"	7.000"	30	43.50 lbs.
220-180	18"	18.000"	17.250"	0.375"	8.000"	*	57.00 lbs.
220-200	20"	20.000"	19.250"	0.375"	9.000"	20	75.70 lbs.
220-240	24"	24.000"	23.250"	0.375"	10.500"	20	101.00 lbs.
220-300	30"	30.000"	29.240"	0.380"	10.500"	*	137.00 lbs.
220-360	36"	36.000"	35.240"	0.380"	10.500"	*	175.00 lbs.
220-420	42"	42.000"	41.240"	0.380"	12.000"	*	229.00 lbs.
220-480	48"	48.000"	47.240"	0.380"	13.500"	*	350.00 lbs.

- Dimensions conform to ASME B16.9.
- Material conforms to ASTM A-234 Grade B.
- *Size and Thickness does not correspond to any pipe schedule number.

