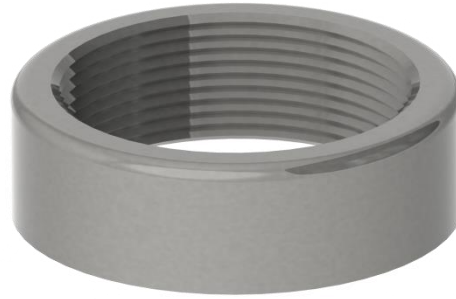
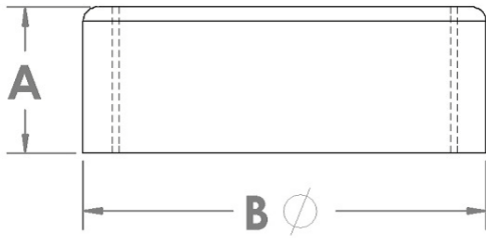




Threaded Half Couplers



Part No.	Nominal Pipe Size	Length (A)	Ø B	Weight
THC-0012	1/8"	17/32"	0.563"	0.018 lbs.
THC-0025	1/4"	17/32"	0.719"	0.038 lbs.
THC-0038	3/8"	17/32"	0.875"	0.049 lbs.
THC-0050	1/2"	23/32"	1.063"	0.082 lbs.
THC-0075	3/4"	3/4"	1.313"	0.126 lbs.
THC-0100	1"	15/16"	1.576"	0.194 lbs.
THC-0125	1-1/4"	31/32"	1.900"	0.248 lbs.
THC-0150	1-1/2"	31/32"	2.200"	0.341 lbs.
THC-0200	2"	1"	2.750"	0.518 lbs.
THC-0250	2-1/2"	1-1/2"	3.250"	1.102 lbs.
THC-0300	3"	1-9/16"	4.000"	1.543 lbs.
THC-0350	3-1/2"	1-5/8"	4.625"	1.653 lbs.
THC-0400	4"	1-11/16"	5.000"	2.204 lbs.
THC-0500	5"	2"	6.250"	3.750 lbs.
THC-0600	6"	1-7/8"	7.390"	5.180 lbs.
THC-0800	8"	2-1/4"	9.500"	8.600 lbs.
THC-1000	10"	3"	11.750"	17.700 lbs.
THC-1200	12"	3"	13.750"	18.950 lbs.

- Pipe Specification ASTM A53.
- Please see the PDF "Adapters_Groove_Specifications" for Cut & Roll Groove Details.

