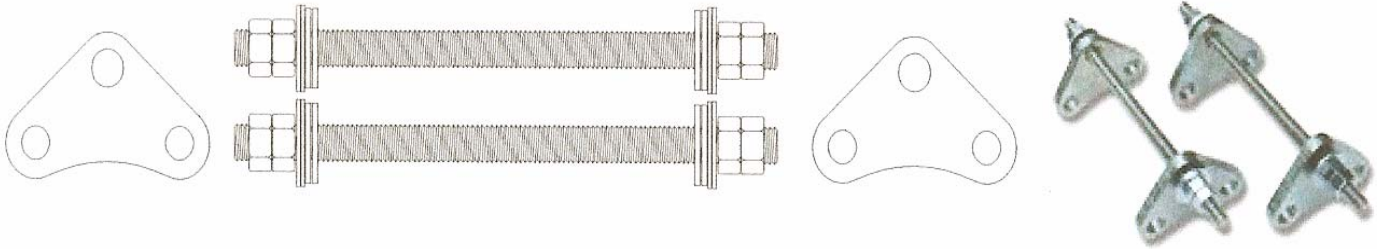


**Morrell**  
INDUSTRIES, INC.  
IRRIGATION EQUIPMENT MANUFACTURING

**CONTROL ROD UNITS  
CARBON STEEL  
(ZINC PLATED)**

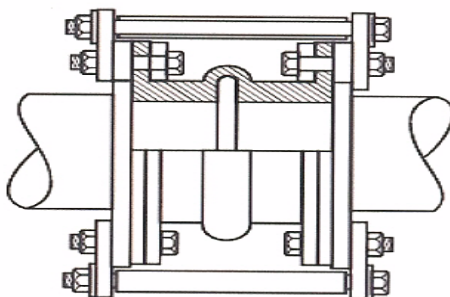


COMPLETE UNIT PART #	SIZE	EXP. JOINT APPLICATION	GUSSET PLATE #	PLATE THK.	PLATE WEIGHT	CONTROL ROD PART #	APPROX. WEIGHT
CRUO-0150	1 1/2"	BOTH	CRP-0150	1/2"	0.8	CR0625-14S	6.4
CRUO-0200	2"	BOTH	CRP-0200	1/2"	1.0	CR0625-14S	7.2
CRUO-0250	2 1/2"	BOTH	CRP-0250	1/2"	1.3	CR0625-14S	8.4
CRUO-0300	3"	BOTH	CRP-0300	1/2"	1.6	CR0625-14S	9.6
CRUO-0400	4"	SINGLE	CRP-0400	1/2"	1.4	CR0625-14S	8.8
CRUT-0400	4"	TWIN	CRP-0400	1/2"	1.4	CR0625-17T	9.2
CRUO-0500	5"	SINGLE	CRP-0500	1/2"	1.5	CR0625-14S	9.2
CRUT-0500	5"	TWIN	CRP-0500	1/2"	1.5	CR0625-17T	9.6
CRUO-0600	6"	SINGLE	CRP-0600	1/2"	1.7	CR0625-14S	10.0
CRUT-0600	6"	TWIN	CRP-0600	1/2"	1.7	CR0625-17T	10.4
CRUO-0800	8"	SINGLE	CRP-0800	1/2"	2.1	CR0875-18S	16.4
CRUT-0800	8"	TWIN	CRP-0800	1/2"	2.1	CR0875-23T	17.6
CRUS-1000	10"	SINGLE	CRP-1000	3/4"	3.5	CR0875-18S	22.0
CRUT-1000	10"	TWIN	CRP-1000	3/4"	3.5	CR0875-23T	23.2
CRUS-1200	12"	SINGLE	CRP-1200	3/4"	5.0	CR1125-18S	34.0
CRUT-1200	12"	TWIN	CRP-1200	3/4"	5.0	CR1125-23T	36.0
CRUS-1400	14"	SINGLE	CRP-1416	3/4"	5.0	CR1125-18S	34.0
CRUT-1400	14"	TWIN	CRP-1416	3/4"	5.0	CR1125-23T	36.0
CRUS-1600	16"	SINGLE	CRP-1416	3/4"	5.0	CR1125-18S	34.0
CRUT-1600	16"	TWIN	CRP-1416	3/4"	5.0	CR1125-23T	36.0
CRUS-1800	18"	SINGLE	CRP-1820	3/4"	6.0	CR1125-18S	38.0
CRUT-1800	18"	TWIN	CRP-1820	3/4"	6.0	CR1125-23T	40.0
CRUS-2000	20"	SINGLE	CRP-1820	3/4"	6.0	CR1125-18S	38.0
CRUT-2000	20"	TWIN	CRP-1820	3/4"	6.0	CR1125-23T	40.0
CRUS-2400	24"	SINGLE	CRP-2400	1"	7.5	CR1250-18S	47.0
CRUT-2400	24"	TWIN	CRP-2400	1"	7.5	CR1250-23T	49.0

Control Rods are used to prevent the expansion joint from being elongated to much and/or being twisted angular to much.

**COMPLETE UNITS CONSIST OF THE FOLLOWING:**

- 2 - Rods
- 4 - Plates
- 8 - Nuts
- 8 - Steel Washers
- 8 - Neoprene Washers



Customer
Project
Engineer
Architect:
PO#

